

OFFICIAL
**LONDON
THEATRE**
.com

**December 2019 -
February 2020**

Access London Theatre



Includes venue accessibility information

Welcome to the Winter 2019-20 edition of Access London Theatre, compiled and published by the Society of London Theatre.



Get Into Theatre

Get Into Theatre is the essential website to help you find all the information and opportunities you need to pursue a successful career in theatre. From backstage to performing, training to apprenticeships, you will find up-to-date theatre jobs information and advice. Get Into Theatre wants everyone to know about how to get a career in theatre no matter your ability or disability, background or ethnicity. Whoever you are, there are lots of things happening in the UK that can help you get into theatre. Generously funded and supported by the Andrew Lloyd Webber Foundation and UK Theatre/ Society of London Theatre and produced by The Stage.



Monthly Picks

Would you like to find out more about new shows opening each month in London? Head over to Official London Theatre's YouTube channel where you can watch our Monthly Picks video series! Make sure to take a look at our West End Round Up video series too, to catch up on the latest theatre news every week.



New Year Sale

Official London Theatre's New Year Sale returns later this year, with tickets for a range of top London shows at just £10, £20, £30 or £40 in January and February 2020. Visit OfficialLondonTheatre.com for further details, including information on our pre-booking request period for theatregoers with access requirements.

Please get in touch at access@soltukt.co.uk if you have any feedback on what we can do to improve your experience, either using this brochure or attending the theatre.

This brochure is available in print, Braille, MP3, or on CD. Please call 020 7557 6700 or email enquiries@soltukt.co.uk to request your choice of format.

All text and listings correct at time of going to print.

Find out more at OfficialLondonTheatre.com/access



How does it work?



Audio Description is a live verbal commentary providing information on the visual elements of a production as it unfolds. It describes action that is essential to the understanding of the story, as well as other visual information such as the style and design, sets, costumes, facial expressions and visual jokes. The description is delivered around the dialogue of a performance and patrons listen to it through a discreet headset.



Captioning is similar to subtitling. At a captioned performance the words are displayed on a screen(s) placed near the stage or in the set and can be seen at the same time as they are spoken or sung. Speakers' names, sound effects and offstage noises are also shown. A trained captioner prepares the script in advance to mirror the rhythm and flow of the performance and the captions are delivered live as the action happens on stage.






At **Sign Language Interpreted Performances** an interpreter will stand in a clearly visible position and interpret the spoken and heard aspects of the show.



Relaxed Performances are adapted in a number of ways to reduce anxiety and create a supportive atmosphere, including adjusting light and sound levels, providing 'chill-out' areas and demonstrating an embracing attitude towards audience noise and movement in the auditorium. Relaxed performances could provide an opportunity for people with autism spectrum conditions, learning disabilities or other sensory and communication needs to access theatre in a relaxed environment.

Show Listings

Venue Information p29-35

Show Title					
#	Page				
& Juliet	10		•	•	
A					
Amélie The Musical	10			•	
RSC: As You Like It	10	•	•	•	•
B					
Bee In Me, The	11				•
C					
Canterville Ghost, The	11	•			
Carmen	11			•	
Peeping Tom: Child (Kind)	12			•	
Christmas At The (Snow) Globe	12	•	•	•	
Christmas Carol, A	12	•	•		•
Cinderella	13	•	•	•	•
Kiss And Cry Collective: Cold Blood	13			•	
D					
Death Of England	13		•		
Dick Whittington	14	•	•	•	•
Duchess of Malfi, The	14	•	•		
F					
Fairview	14	•	•		
Faustus: That Damned Woman	15		•		
G					
The Gift	15	•	•	•	•
H					
Harry Potter And The Cursed Child	15	•	•		
The Haystack	16	•	•		
Henry VI	16	•	•		
K					
Kind Of People, A	16	•	•		•
RSC: Kunene And The King	18		•		
L					
Little Match Girl, The	18				•
M					
Magic Goes Wrong	18	•	•	•	•
Mám: Post-Show Talk	19			•	

Sound amplification



Wheelchair accessible



Air conditioned



Show Title					
Martha, Josie & The Chinese Elvis	19	•	•		
RSC: Measure For Measure	19	•	•	•	
Diverse City: Mid Life	20	•	•		•
Midnight Movie	20	•	•	•	•
M-SET: To The Moon And Back	20				•
My Brilliant Friend	21	•	•		
O					
Ocean At The End Of The Lane, The	21	•	•		•
Oi Frog & Friends! Live	21			•	•
P					
Poet In Da Corner	22		•		
R					
Ravens: Spassky Vs Fischer	22	•	•		
Red Shoes, The	22	•			
Richard III	23	•	•		•
S					
Scenes With Girls	23		•		
School Of Rock - The Musical	23				•
Snail And The Whale, The	24			•	•
Snowflake	24	•	•		
Snowman, The	24				•
Snow Queen, The (Park Theatre)	25	•			
Snow Queen, The (Rose Theatre)	25	•		•	•
Swive	25	•	•		•
T					
RSC: The Taming Of The Shrew	26	•	•		
Taste Of Honey, A	26	•	•		
Teenage Dick	26	•	•		
Three Sisters	27	•	•		
Tina: The Tina Turner Musical	27		•	•	
Translations	27	•	•		
U					
Uncle Vanya	28	•	•		
W					
Welkin, The	28	•	•		
Wolf, The Duck And The Mouse, The	28				•

Audio Described listings by date



Dec	Show	Venue	Page
Thu 12	Fairview	Young Vic	14
Fri 13	Translations	National Theatre	27
Sat 14	Cinderella	Lyric Hammersmith	13
Sat 14	RSC: Measure For Measure	Barbican Theatre	19
Sat 14	Translations	National Theatre	27
Sun 15	The Canterville Ghost	Unicorn Theatre	11
Tue 17	RSC: The Taming Of The Shrew	Barbican Theatre	26
Sat 21	Christmas At The (Snow) Globe	Shakespeare's Globe	12
Fri 27	The Snow Queen	Park Theatre	25
Sat 28	RSC: As You Like It	Barbican Theatre	10
Sat 28	The Snow Queen	Rose Theatre Kingston	25
Until 21 Dec	Midnight Movie	Royal Court Theatre	20
Jan			
Thu 2	Martha, Josie & The Chinese Elvis	Park Theatre	19
Sat 4	Dick Whittington	Theatre Royal Stratford East	14
Sat 4	My Brilliant Friend Parts 1&2	National Theatre	21
Sat 4	The Duchess Of Malfi	Almeida Theatre	14
Sun 5	Richard III	Sam Wanamaker Playhouse	23
Mon 6	A Christmas Carol	The Old Vic	12
Fri 10	The Ocean At The End Of The Lane	National Theatre	21
Sat 11	Harry Potter And The Cursed Child	Palace Theatre	15
Sat 11	Ravens: Spassky Vs Fischer	Hampstead Theatre	22
Sat 11	The Ocean At The End Of The Lane	National Theatre	21
Sat 11	The Red Shoes	Sadler's Wells	22
Tue 14	My Brilliant Friend Part 2	National Theatre	21
Tue 14	Snowflake	Kiln Theatre	24
Sat 18	A Kind Of People	Royal Court Theatre	16
Sat 18	Swive	Sam Wanamaker Playhouse	25
Wed 22	Henry VI	Sam Wanamaker Playhouse	16
Sat 25	Teenage Dick	Donmar Warehouse	26
Fri 31	Three Sisters	National Theatre	27
Feb			
Sat 1	Three Sisters	National Theatre	27
Sat 8	A Taste Of Honey	Trafalgar Studios 1	26
Wed 12	Uncle Vanya	Harold Pinter	28
Sat 15	The Gift	Theatre Royal Stratford East	15
Sat 22	Magic Goes Wrong	Vaudeville Theatre	18
Sat 29	The Haystack	Hampstead Theatre	16
Wed 19-Sat 22	Diverse City: Mid Life	Barbican Centre	20

Captioned listings by date



Dec	Show	Venue	Page
Tue 3	Translations	National Theatre	27
Tue 10	Translations	National Theatre	27
Sat 14	RSC: Measure For Measure	Barbican Theatre	19
Tue 17	RSC: The Taming Of The Shrew	Barbican Theatre	26
Wed 18	Cinderella	Lyric Hammersmith	13
Thu 19	Martha, Josie & The Chinese Elvis	Park Theatre	19
Fri 20	The Duchess Of Malfi	Almeida Theatre	14
Sat 21	My Brilliant Friends Parts 1&2	National Theatre	21
Sun 22	Christmas At The (Snow) Globe	Shakespeare's Globe	12
Sat 28	RSC: As You Like It	Barbican Theatre	10
Sat 28	My Brilliant Friend Parts 1&2	National Theatre	21
Until 21 Dec	Midnight Movie	Royal Court Theatre	20
Jan			
Thu 2	The Ocean At The End Of The Lane	National Theatre	21
Fri 3	Dick Whittington	Theatre Royal Stratford East	14
Fri 3	Three Sisters	National Theatre	27
Mon 6	My Brilliant Friend Part 1	National Theatre	21
Tue 7	Ravens: Spassky Vs Fischer	Hampstead Theatre	22
Wed 8	A Kind Of People	Royal Court Theatre	16
Wed 8	Tina: The Tina Turner Musical	Aldwych Theatre	27
Thu 9	Fairview	Young Vic	14
Thu 9	Snowflake	Kiln Theatre	24
Thu 9	Swive	Sam Wanamaker Playhouse	25
Fri 10	A Christmas Carol	The Old Vic	12
Mon 13	The Ocean At The End Of The Lane	National Theatre	21
Tue 14	A Taste Of Honey	Trafalgar Studios 1	26
Wed 15	A Kind Of People	Royal Court Theatre	16
Wed 15	My Brilliant Friend Part 2	National Theatre	21
Sat 18	Harry Potter And The Cursed Child	Palace Theatre	15
Tue 21	& Juliet	Shaftesbury Theatre	10
Wed 22	The Ocean At The End Of The Lane	National Theatre	21
Sun 26	Henry VI	Sam Wanamaker Playhouse	16
Sun 26	Richard III	Sam Wanamaker Playhouse	23
Mon 27	Teenage Dick	Donmar Warehouse	26
Tue 28	Three Sisters	National Theatre	27
Wed 29	Three Sisters	National Theatre	27
Fri 31	Magic Goes Wrong	Vaudeville Theatre	18
Fri 31	Scenes With Girls	Royal Court Theatre	23

Captioned listings by date



Feb	Show	Venue	
Fri 7	Scenes With Girls	Royal Court Theatre	23
Wed 12	Poet In Da Corner	Royal Court Theatre	22
Fri 14	Scenes With Girls	Royal Court Theatre	23
Fri 14	The Gift	Theatre Royal Stratford East	15
Sat 15	Faustus: That Damned Woman	Lyric Hammersmith	15
Wed 19	Poet In Da Corner	Royal Court Theatre	22
Fri 21	Scenes With Girls	Royal Court Theatre	23
Sat 22	The Welkin	National Theatre	28
Mon 24	The Welkin	National Theatre	28
Tue 25	Death Of England	National Theatre	13
Wed 26	The Welkin	National Theatre	28
Wed 26	Uncle Vanya	Harold Pinter Theatre	28
Thu 27	The Haystack	Hampstead Theatre	16
Sat 29	RSC: Kunene And The King	Ambassadors Theatre	18
Wed 19-Sat 22	Diverse City: Mid Life	Barbican Centre	20

Sign Language Interpreted listings by date



Dec	Show	Venue	
Wed 11	The Snail And The Whale	Apollo Theatre	24
Thu 12	Oi Frog & Friends! Live	Lyric Theatre	21
Fri 27	Cinderella	Lyric Hammersmith	13
Thu 19-Mon 23	Christmas At The (Snow) Globe	Shakespeare's Globe	12
Until 21 Dec	Midnight Movie	Royal Court Theatre	20
Jan			
Fri 3	Dick Whittington	Theatre Royal Stratford East	14
Sat 4	The Snow Queen	Rose Theatre Kingston	25
Tue 7	RSC: As You Like It	Barbican Theatre	10
Sat 11	Amélie the Musical	The Other Palace	10
Tue 14	RSC: Measure For Measure	Barbican Theatre	19
Fri 24	Peeping Tom: Child (Kind)	Barbican Centre	12
Thu 30	Kiss And Cry Collective: Cold Blood	Barbican Centre	13
Feb			
Fri 7	Mám: Post-Show Talk	Sadler's Wells	19
Wed 12	Tina: The Tina Turner Musical	Aldwych Theatre	27
Thu 13	Magic Goes Wrong	Vaudeville Theatre	18
Thu 13	The Gift	Theatre Royal Stratford East	15
Tue 25	Carmen	London Coliseum	11
Wed 26	& Juliet	Shaftesbury Theatre	10
Wed 19-Sat 22	Diverse City: Mid Life	Barbican Centre	20

Relaxed Performance listings by date



Dec	Show	Venue	Page
Wed 4	Cinderella	Lyric Hammersmith	13
Wed 4	The Snail And The Whale	Apollo Theatre	24
Wed 4	The Snowman	The Peacock	24
Thu 5	RSC: As You Like It*	Barbican Theatre	10
Tue 10	The Wolf, The Duck And The Mouse	Unicorn Theatre	28
Thu 12	Oi Frog & Friends! Live	Lyric Theatre	21
Thu 12	The Little Match Girl	Lilian Baylis Studio	18
Sun 15	The Snail And The Whale	Apollo Theatre	24
Sun 29	The Wolf, The Duck And The Mouse	Unicorn Theatre	28
Fri 13-Sat 21	M-SET: To The Moon And Back	Barbican Centre	20
Until 21 Dec	Midnight Movie	Royal Court Theatre	20
Jan			
Thu 2	Dick Whittington	Theatre Royal Stratford East	14
Thu 2	The Wolf, The Duck And The Mouse	Unicorn Theatre	28
Fri 3	The Snow Queen	Rose Theatre Kingston	25
Sat 11	A Christmas Carol	The Old Vic	12
Thu 16	Richard III	Sam Wanamaker Playhouse	23
Sat 18	The Ocean At The End Of The Lane	National Theatre	21
Mon 20	School Of Rock - The Musical	Gillian Lynne Theatre	23
Feb			
Sat 8	Swive	Sam Wanamaker Playhouse	25
Thu 13	The Gift	Theatre Royal Stratford East	15
Wed 26	The Bee In Me	Unicorn Theatre	11
Wed 19-Sat 22	Diverse City: Mid Life*	Barbican Centre	20

*Please note, these are chilled performances. These performances take a more casual approach to noise and movement in the auditorium, but the performance itself is unchanged. During chilled performances, customers can go in and out of the auditorium at any point during the show.

& Juliet



Shaftesbury Theatre, Shaftesbury Avenue
Leicester Square

020 7379 5399 | boxoffice@shaftesburytheatre.com
£38.50* | Length: 2h30, inc. interval

The most famous love story of all time. Remixed. & Juliet is the hilariously irreverent new musical that proves when it comes to love, there's always life after Romeo...

Captioned: Tue 21 Jan 7pm (by Stagertext)

Sign Language Interpreted: Wed 26 Feb 7.30pm (by Donna Ruane for Theatresign)



Amélie The Musical



The Other Palace, Palace Street
Victoria

020 7087 7966 | access@theotherpalace.co.uk
£25* | Length: 2h15, inc. interval

Amélie The Musical is coming to the West End. The much loved five-time Oscar®-nominated film is brought to life by a cast of remarkably talented actor-musicians and set to a critically acclaimed re-orchestrated score.

Sign Language Interpreted: Sat 11 Jan 2.30pm (by Emma Isted for Theatresign)



RSC: As You Like It



Barbican Theatre, Silk Street Barbican

020 7382 7348 | tickets@barbican.org.uk
£5-£37.50* | Length: 2h55, inc. interval

All the world really is a stage in Kimberley Sykes' playful and imaginative take on Shakespeare's romantic comedy.

Audio Described & Captioned: Sat 28 Dec 1.15pm (in-house), Touch Tour 11.15am

Sign Language Interpreted: Tue 7 Jan 7.15pm (by Clare Edwards)

Chilled Performance: Thu 5 Dec 1.15pm



The Bee In Me



Unicorn Theatre, Tooley Street
🚫 London Bridge

020 7645 0560 | boxoffice@unicorntheatre.com
£6-£22* | Length: 1h10, no interval

One ordinary boy living an ordinary life. Every day the same. Except today. Today he can fly... A new adaptation of the groundbreaking novel by one of Germany's most exciting writers, Roland Schimmelpfennig. For ages 8-12.

Relaxed Performance: Wed 26 Feb 11am



The Canterville Ghost



Unicorn Theatre, Tooley Street
🚫 London Bridge

020 7645 0560 | boxoffice@unicorntheatre.com
£12-22* | Length: 2h, inc. interval

With spine-tingling magic, spectacular illusions and ghoulish effects, this delightfully spooky retelling of Oscar Wilde's comic novel is set to amaze the whole family this Christmas. For ages 7 and over.

Audio Described: Sun 15 Dec 2pm (by VocalEyes), Touch Tour 12.30pm



Carmen



London Coliseum, St Martin's Lane
🚫 Leicester Square

020 7845 9300 | access@eno.org
Access rate: half-price, from £20* | Length: 2h45, inc. interval

One of the most popular operas ever written, Carmen bursts with passion and well-known songs such as 'Habanera'.

Sign Language Interpreted: Tue 25 Feb 7.30pm (by Wendy Ebsworth)



*Prices are face value. Fees may apply.

Peeping Tom: Child (Kind)



Barbican Centre, Silk Street

Barbican

020 7382 7348 | access@barbican.org.uk

50% off standard tickets priced at £16-28* | Length: 1h25, no interval

Inspired by the human psyche and the construction of identity, Peeping Tom return with their trademark combination of unsettling imagery, humour and phenomenal choreography to explore perceptions of childhood.

Sign Language Interpreted: Fri 24 Jan 7.45pm (by Martin Roberts), includes post-show talk



Christmas At The (Snow) Globe



Shakespeare's Globe, Bankside London Bridge

020 7401 9919 | access@shakespearesglobe.com

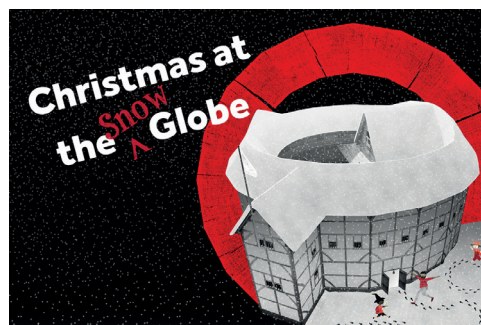
£7.50-£17.50* | Length: 1h30, inc. interval

Sing along with your favourite festive songs in the Globe Theatre as we raise our voices to the Southwark sky to celebrate a bright and very merry Christmas.

Audio Described: Sat 21 Dec 2pm, Touch Tour 12pm (by VocalEyes)

Captioned: Sun 22 Dec 2pm & 6pm (by Stagertext)

Sign Language Interpreted: Thu 19 Dec & Fri 20 Dec 6pm, Sat 21 Dec – Mon 23 Dec 2pm & 6pm (by Becky Barry)



A Christmas Carol



The Old Vic, The Cut

Waterloo

0344 871 7628 | access@oldvictheatre.com

£21* | Length: 2h05, inc. interval

Matthew Warchus' big-hearted, smash hit production of Charles Dickens' immortal classic returns to The Old Vic.

Audio Described: Mon 6 Jan 7pm (in-house)

Captioned: Fri 10 Jan 7pm (in-house)

Relaxed Performance: Sat 11 Jan 1pm



Cinderella



Lyric Hammersmith, King Street Hammersmith

020 8741 6850 | tickets@lyric.co.uk
£15* | Length: 2h20, inc. interval



Polish your glass slippers, dust off your carriage and join us as the clock strikes midnight for a Lyric twist on the Fairy Godmother of pantomimes, Cinderella.

Audio Described: Sat 14 Dec 6pm (in-house)

Captioned: Wed 18 Dec 6pm (in-house)

Sign Language Interpreted: Fri 27 Dec 2pm (in-house)

Relaxed Performance: Wed 4 Dec 1.30pm



Kiss And Cry Collective: Cold Blood



Barbican Centre, Silk Street

Barbican

020 7382 7348 | access@barbican.org.uk
50% off standard tickets priced at £16-28* | Length: 1h20, no interval



In the newest production from Kiss And Cry Collective dancing hands star in elaborate miniature sets, the action filmed live to become epic on a big screen. This wonderfully whimsical production explores the fleeting fragility of life.

Sign Language Interpreted: Thu 30 Jan 7.45pm (by Martin Roberts), includes post-show talk



Death Of England



National Theatre, Southbank

Waterloo

020 7452 3000 | access@nationaltheatre.org.uk
£16* | Length: TBC



After the death of his dad, Michael is powerless and angry. In a state of heartbreak, he confronts difficult truths about his father's legacy and the country that shaped him.

Captioned: Tue 25 Feb 8pm (by Stagertext)



*Prices are face value. Fees may apply.

Dick Whittington



Theatre Royal Stratford East, Gerry Raffles Square

🚫 Stratford

020 8534 0310 | tickets@stratfordeast.com

£10-£35* | Length: TBC



Join Dick Whittington on his quest for fame and fortune in London's favourite panto.



Audio Described: Sat 4 Jan 5pm (by Alison Clarke and Ruth James), Touch Tour 4pm



Captioned: Fri 3 Jan 7pm (by Suzanne Walker)

Sign Language Interpreted: Fri 3 Jan 2pm (by Jacqui Beckford)



Relaxed Performance: Thu 2 Jan 2pm

The Duchess Of Malfi



Almeida Theatre, Almeida Street

🚫 Highbury & Islington

020 7359 4404 | access@almeida.co.uk

£25* | Length: TBC



Rebecca Frecknall follows her Olivier Award-winning production of Summer And Smoke and Three Sisters with The Duchess Of Malfi, John Webster's electrifying revenge tragedy about rage, resistance and a deadly lust for power.



Audio Described: Sat 4 Jan, 2.30pm (by VocalEyes), Touch Tour 12.45pm



Captioned: Fri 20 Dec 7.30pm (in-house)



Fairview



Young Vic, The Cut

🚫 Southwark

020 7922 2922 | boxoffice@youngvic.org

£10 - £40* | Length: TBC



Following a ground-breaking, sell-out run in New York, Jackie Sibblies Drury's Fairview is an interrogation of our subtly destructive preconceptions. This radical examination of power is directed by Nadia Latif.



Audio Described: Thu 12 Dec 7.30pm (by VocalEyes)



Captioned: Thu 9 Jan 7.30pm (by Stagertext)



Faustus: That Damned Woman



Lyric Hammersmith, King Street

Hammersmith

020 8741 6850 | access@lyric.co.uk

£15* | Length: TBC

Award-winning playwright Chris Bush reimagines the Faust myth to explore what we must sacrifice to achieve greatness, and the legacy that we leave behind.

Directed by Caroline Byrne.

Captioned: Sat 15 Feb 2.30pm (in-house)



The Gift



Theatre Royal Stratford East, Gerry Raffles Square

Stratford

020 8534 0310 | tickets@stratfordeast.com

£10-£35* | Length: TBC

An outrageous comedy drama about imperialism, cross-racial adoption, cultural appropriation and drinking tea.

Audio Described: Sat 15 Feb 2.30pm (in-house)

Captioned: Fri 14 Feb 7.30pm (in-house)

Sign Language Interpreted: Thu 13 Feb 7.30pm (in-house)

Relaxed Performance: Thu 13 Feb 2.30pm



Harry Potter And The Cursed Child



Palace Theatre, Shaftesbury Avenue

Leicester Square

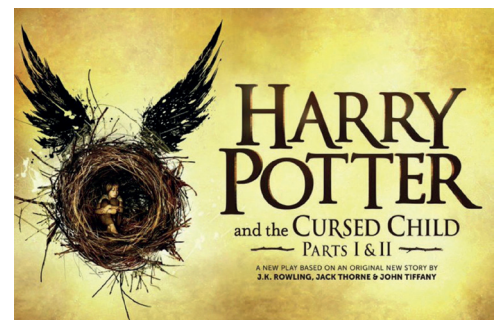
0330 333 4410 | CursedChildAccess@nimaxtheatres.com

£37.50* | Length: Part 1: 2h40, inc. interval, Part 2: 2h35 inc. interval

Based on an original new story by J.K. Rowling, Jack Thorne and John Tiffany, Harry Potter and the Cursed Child is a new play by Jack Thorne.

Audio Described: Sat 11 Jan 2pm, Touch Tour 12pm (by VocalEyes)

Captioned: Sat 18 Jan 2pm (by Stagertext)



*Prices are face value. Fees may apply.

The Haystack



Hampstead Theatre, Eton Avenue

⊖ Swiss Cottage

020 7722 9301 | access@hampsteadtheatre.com

£16* | Length: TBC

AI Blyth's explosive espionage thriller challenges the 'nothing to hide, nothing to fear' mantra and explores how we can live honestly, love freely, and stay authentic when the advances in cutting-edge technology outpace the law.

Audio Described: Sat 29 Feb 3pm (by Miranda Yates), Touch Tour 1.30pm

Captioned: Thu 27 Feb 7.30pm (by Stagertext)



Henry VI



Sam Wanamaker Playhouse, Shakespeare's Globe,

Bankside ⊖ London Bridge

020 7401 9919 | access@shakespearesglobe.com

£10-£62* | Length: TBC

Experience the Wars of the Roses like never before in this dynamic production which sees all three parts of Shakespeare's trilogy condensed into one epic event.

Audio Described: Wed 22 Jan 7.30pm (by VocalEyes), Touch Tour 5.30pm

Captioned: Sun 26 Jan 1pm (by Stagertext)



A Kind Of People



Royal Court Theatre, Sloane Square ⊖ Sloane Square

020 7565 5000 | boxoffice@royalcourttheatre.com

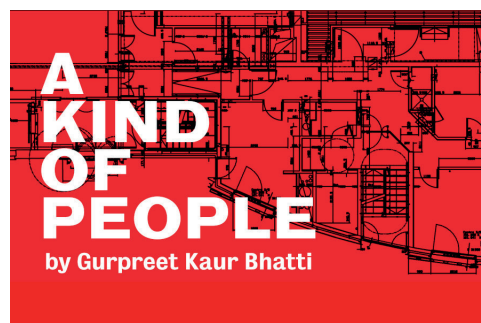
£15* | Length: TBC

Set amidst a contemporary British community, Gurpreet Kaur Bhatti's new play, directed by Michael Buffong, asks how it's possible to get on when the odds are stacked against you.

Audio Described: Sat 18 Jan 2.30pm (by VocalEyes), Touch Tour 1pm

Captioned: Wed 8 Jan, Wed 15 Jan 7.30pm (in-house)

Relaxed Performance: Sat 11 Jan 2.30pm



IN THE HEART OF
LEICESTER SQUARE

TKTS - THE OFFICIAL LONDON THEATRE TICKET BOOTH

IN LONDON
FOR A WEEK

LOOKING FOR A
GOOD DEAL

OFFICIAL
LONDON
THEATRE
.com

tkts

OFFICIAL
LONDON
THEATRE
.com

TKTS

LAST MINUTE & DISCOUNT
THEATRE TICKETS

RSC: Kunene And The King



Ambassadors Theatre, West Street
Leicester Square

0800 912 6971 | AMBboxoffice@theambassadors.com
£25-£75. Access Rate: 1/3 off* | Length: 1h35, no interval

South Africa, 2019. 25 years since the first post-apartheid democratic elections, two men from contrasting walks of life are thrust together to reflect on a quarter century of change.

Captioned: Sat 29 Feb 3pm (in-house)



The Little Match Girl



Lilian Baylis Studio, Rosebery Avenue
Angel

020 7863 8015 | tickets@sadlerswells.com
Adults £18, Children £12* | Length: 1h05, no interval

Arthur Pita's The Little Match Girl makes a welcome return for Christmas. Beautifully recreated through dance, song and live atmospheric music, it is a timeless fable about kindness and helping others.

Relaxed Performance: Thu 12 Dec 11am



Magic Goes Wrong



Vaudeville Theatre, Strand Charing Cross

0330 333 4815 | access@nimaxtheatres.com
£15-£26.35* | Length: TBC

Created with Magic legends Penn & Teller. A hapless gang of magicians present a charity event and as the accidents spiral out of control, so does their fundraising target.

Audio Described: Sat 22 Feb 2.30pm (by VocalEyes)

Captioned: Fri 31 Jan 7.30pm (by Stagertext)

Sign Language Interpreted: Thu 13 Feb 7.30pm (by Karen Gager)



Mám: Post-Show Talk



Sadler's Wells, Rosebery Avenue

🚫 Angel

020 7863 8015 | tickets@sadlerswells.com

Free to ticket holders for Fri 7 Feb performance of Mám | Length: TBC

Alistair Spalding in conversation with Michael Keegan-Dolan. Free to same performance ticket holders.

Sign Language Interpreted: Fri 7 Feb 7.30am (by Jeni Draper)



Martha, Josie & The Chinese Elvis



Park Theatre, Clifton Terrace

🚫 Finsbury Park

020 7870 6876 | boxoffice@parktheatre.co.uk

Concessions: £16.50. Standard: £18. Essential companion goes free* | Length: 2h, inc. interval

Hilarious and heartfelt, with a rocking Elvis soundtrack, this quirky, kinky comedy celebrates life's outsiders: sweet yet saucy, it's the perfect 'adult only' alternative Christmas treat.

Audio Described: Thu 2 Jan 3.15pm (in-house), Touch Tour 2pm

Captioned: Thu 19 Dec 7.45pm (in-house)



RSC: Measure For Measure



Barbican Theatre, Silk Street

🚫 Barbican

020 7382 7348 | tickets@barbican.org.uk

£5-£37.50* | Length: TBC

RSC Artistic Director Gregory Doran directs this new production of Measure For Measure, which was written in the early 1600s but feels even more urgent today.

Audio Described & Captioned: Sat 14 Dec 1.15pm (in-house), Touch Tour 11.15am

Sign Language Interpreted: Tue 14 Jan 7.15pm (by Clare Edwards)



*Prices are face value. Fees may apply.

Diverse City: Mid Life



Barbican Centre, Silk Street  Barbican

020 7382 7348 | access@barbican.org.uk
50% off standard tickets priced at £18* | Length: TBC



A new production from Diverse City. Three women paused at a moment in time – the menopause – talk about their fears, confront losses and invite acceptance as they unpack their real-life stories with soaring humour, honesty and rage.



All performances are **BSL integrated** and **audio described** and take place in a **relaxed environment** auditorium.



Wed 19 Feb – Sat 22 Feb 7.45pm, Sat 22 Feb 3pm



Midnight Movie



Royal Court Theatre, Sloane Square  Sloane Square

020 7565 5000 | boxoffice@royalcourttheatre.com
£15* | Length: TBC



Directed by Rachel Bagshaw (The Shape Of The Pain), the production will creatively combine Spoken English, **BSL**, **captioning** and **audio description**, and all shows will be performed in a **relaxed environment**.



Until 21 Dec:
Mon – Sat: 7.45pm (except 3 Dec 7pm)

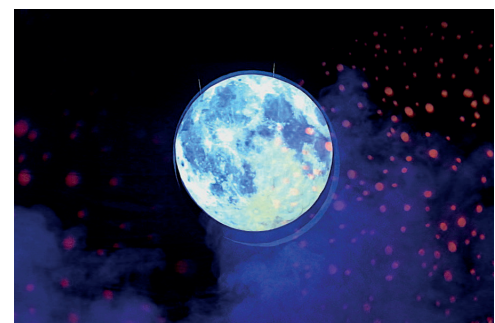


M-SET: To The Moon And Back



Barbican Centre, Silk Street  Barbican

020 7382 7348 | access@barbican.org.uk
£4.50* | Length: 45m, no interval



Knock, knock! Let your little-one open a door to a new world in this fantastical multi-sensory show that immerses children 3 months to 4 years in an adventure to space.



All performances are **relaxed** and suitable for children with sensory sensitivities. Fri 13 Dec – Sat 21 Dec, times vary, please check website for full schedule.



My Brilliant Friend



National Theatre, Southbank Waterloo

020 7452 3000 | access@nationaltheatre.org.uk
£16* | Length: TBC



Lenu Greco recalls a relationship of more than 60 years. Even as life pulls them in separate directions, they remain inextricably bound to one another.

Audio Described: Parts 1 & 2: Sat 4 Jan 2pm & 7pm, Touch Tour 12.30pm;
Part 2: Tue 14 Jan 2pm

Captioned: Parts 1 & 2: Sat 21 Dec 2pm, Sat 28 Dec 2pm; Part 1: Mon 6 Jan 7.30pm; Part 2: Wed 15 Jan 7.30pm (by Stagertext)

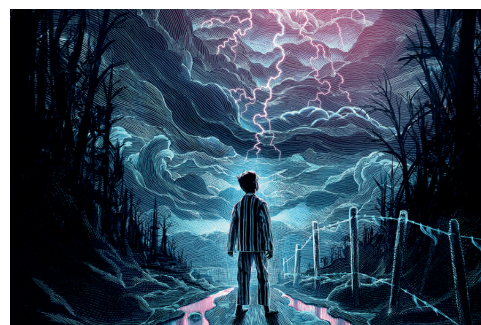


The Ocean At The End Of The Lane



National Theatre, Southbank
 Waterloo

020 7452 3000 | access@nationaltheatre.org.uk
£16* | Length: TBC



Alex finds himself standing beside the duck pond. He's transported to his thirteenth birthday. When his friend Lettie claimed it wasn't a pond, but an ocean...

Audio Described: Fri 10 Jan 7.30pm, Sat 11 Jan 2pm (in-house), Touch Tour 12.30pm



Oi Frog & Friends! Live



Lyric Theatre, Shaftesbury Avenue Piccadilly Circus

0330 333 4815 | access@nimaxtheatres.com
Band A: £9.75 Band B: £7.75* | Length: 55min, no interval



Join FROG, CAT and DOG in this new action-packed stage adaptation of Kes Gray and Jim Field's bestselling books. Expect songs, puppets, laughs and more rhymes than you can shake a chime at

Sign Language Interpreted & Relaxed Performance: Thu 12 Dec 11am
(by Laura Goulden)



*Prices are face value. Fees may apply.

Poet In Da Corner



Royal Court Theatre, Sloane Square

🚫 Sloane Square

020 7565 5000 | boxoffice@royalcourttheatre.com

£15* | Length: 1h20, no interval

Following its critically acclaimed premiere in 2018, this coming of age story inspired by Dizzee Rascal's seminal album, returns for a limited run before going on tour.

Captioned: Wed 12 & Wed 19 Feb 7.30pm (in-house)



Ravens: Spassky Vs Fischer



Hampstead Theatre, Eton Avenue 🚫 Swiss Cottage

020 7722 9301 | access@hampsteadtheatre.com

£16* | Length: TBC

Tom Morton-Smith's gripping psychological thriller depicts a match that became a signature event of the Cold War, exploring how two very different individuals were co-opted to stand for contrasting political systems. Directed by Annabelle Comyn.

Audio Described: Sat 11 Jan 3pm (by Miranda Yates), Touch Tour 1.30pm

Captioned: Tue 7 Jan 7.30pm (by Stagertext)



The Red Shoes



Sadler's Wells Theatre, Rosebery Avenue

🚫 Angel

020 7863 8015 | tickets@sadlerswells.com

£15-£75* | Length: TBC

Matthew Bourne's triumphant adaption of the legendary film returns to London, having won two Olivier awards and dazzled audiences across the UK and the USA.

Audio Described: Sat 11 Jan 2.30pm (by Jeni Draper), Touch Tour 1pm



Richard III



Sam Wanamaker Playhouse, Shakespeare's Globe,
Bankside  London Bridge

020 7401 9919 | access@shakespearesglobe.com
£10-£62* | Length: TBC



Join Shakespeare's monstrously charismatic villain as he embarks on a bloody campaign for the crown. Richard's reign of terror is about to begin...

Audio Described: Sun 5 Jan 1pm (by VocalEyes), Touch Tour 11am

Captioned: Sun 26 Jan 6.30pm (by Stagertext)

Relaxed Performance: Thu 16 Jan 7.30pm



Scenes With Girls



Royal Court Theatre, Sloane Square
 Sloane Square

020 7565 5000 | boxoffice@royalcourttheatre.com
£15* | Length: TBC



Tosh and Lou. 22 scenes. In a space they have created, using a language they have created, the two girls theorise. They have each other. They'll never be like the other girls.

Captioned: Fri 31 Jan 7.45pm, Fri 7, 14 & 21 Feb 7.45pm (in-house)

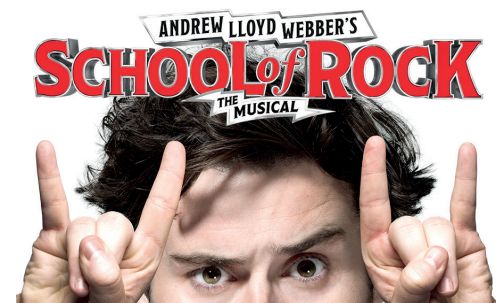


School Of Rock - The Musical



Gillian Lynne Theatre, Drury Lane  Covent Garden

020 7240 1248 | relaxed@mousetrap.org.uk
£3-£20* | Length: 2h30, inc. interval



Mousetrap Theatre Projects is hosting its 9th Relaxed Performance at School of Rock for families with young people with additional needs. To apply for tickets, be added to the mousetrap access mailing list or for more information, please email relaxed@mousetrap.org.uk.

Relaxed Performance: Mon 20 Jan 12pm (by Mousetrap Theatre Projects)



*Prices are face value. Fees may apply.

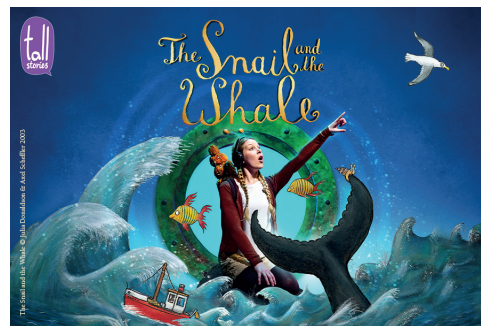
The Snail And The Whale



Apollo Theatre, Shaftesbury Avenue
Piccadilly Circus

0330 333 4815

£7.50-£11.50* | Length: 55min, no interval



Join an adventurous young girl and her seafaring father as they reimagine the story of a tiny snail's incredible trip around the world, inspired by Julia Donaldson and Axel Scheffler's much-loved picture book.

Sign Language Interpreted: Wed 11 Dec 11am (by Jeni Draper)

Relaxed Performance: Wed 4 Dec 11am, Sun 15 Dec 4pm



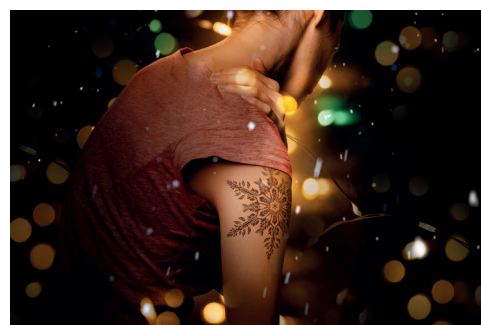
Snowflake



Kiln Theatre, Kilburn High Road
Kilburn

020 7625 0138 | access@kilntheatre.com

£10.50-£15* | Length: TBC



An epic story about generational conflict and whether we're living in the best or worst of times... 'Mike Bartlett's drama for a divided Britain' The Guardian.

Audio Described: Tue 14 Jan 6pm (by VocalEyes)

Captioned: Thu 9 Jan 7.30pm (by Stagertext)



The Snowman



The Peacock, Portugal Street
Holborn

020 7863 8015 | tickets@sadlerswells.com

£18-£55* | Length: TBC



Based on the beloved film and book, The Snowman is back at The Peacock for the 22nd year. This stage-adaption features exquisite dancing, storytelling, spectacle and live music, including Walking in the Air.

Relaxed Performance: Wed 4 Dec 2.30pm



The Snow Queen



Park Theatre, Clifton Terrace
Finsbury Park

020 7870 6876 | boxoffice@parktheatre.co.uk

Concessions: £16.50-£23.50. Standard: £18.50. Essential companion goes free*

Length: 1h50 inc. interval

For everyone who loves Frozen, come see how it all began as the original Snow Queen casts her magical spell over Park Theatre this Christmas.

Audio Described: Fri 27 Dec 3pm (in-house), Touch Tour 2pm



The Snow Queen



Rose Theatre Kingston, High Street Finsbury Park

020 8174 0090 | info@rosetheatrekingston.org

£10-£35* | Length: TBC

In this spellbinding new adaptation of Hans Christian Andersen, Gerda discovers her best friend has been lured to the frozen north. Although she knows the trap has been laid for her, Gerda has no choice but to follow.

Audio Described: Sat 28 Dec 11am (in-house)

Sign Language Interpreted: Sat 4 Jan 11am (in-house)

Relaxed Performance: Fri 3 Jan 11am (in-house)



Swive



Sam Wanamaker Playhouse, Shakespeare's Globe,
Bankside Finsbury Park

020 7401 9919 | access@shakespearesglobe.com

£10-£62* | Length: TBC

A savage new play by award-winning writer Ella Hickson that explores the relationship between beauty, sex and power in the reign of Elizabeth I.

Audio Described: Sat 18 Jan 2pm (by VocalEyes), Touch Tour 12pm

Captioned: Thu 9 Jan 7.30pm (by Stagertext)

Relaxed Performance: Sat 8 Feb 2pm



*Prices are face value. Fees may apply.

RSC: The Taming Of The Shrew



Barbican Theatre, Silk Street
Barbican

020 7382 7348 | tickets@barbican.org.uk
£5-£37.50* | Length: 2h50, inc. interval



The ultimate battle of the sexes is turned on its head in Justin Audibert's The Taming of the Shrew as the 1590s are reimagined – with women in charge.

Audio Described: Tue 17 Dec 7.15pm (in-house), Touch Tour 5.15pm
Captioned: Tue 17 Dec 7.15pm (in-house)



A Taste Of Honey



Trafalgar Studios, Whitehall Charing Cross

0800 912 6971 | access@trafalgarentertainment.com
£25* | Length: 2h25, inc. interval



When her mother Helen runs off with a car salesman, feisty teenager Jo takes up with Jimmie, a sailor who promises to marry her, before he heads for the seas. Art student Geof moves in and assumes the role of surrogate parent until, misguidedly, he sends for Helen and their unconventional setup unravels.

Audio Described: Sat 8 Feb 2.30pm (by VocalEyes)
Captioned: Tue 14 Jan 7.30pm (by Stagertext)



Teenage Dick



Donmar Warehouse, Earlham Street Covent Garden

020 3282 3808 | access@donmarwarehouse.com
£10-£40* | Length: TBC



Mike Lew's darkly comic take on Shakespeare's Richard III has its UK debut. Donmar Artistic Director Michael Longhurst directs a cast including Daniel Monks as Richard.

Audio Described: Sat 25 Jan 2.30pm (by VocalEyes), Touch Tour 1pm
Captioned: Mon 27 Jan 7.30pm (by Stagertext)



Three Sisters



National Theatre, Southbank Waterloo

020 7452 3000 | access@nationaltheatre.org.uk
£16* | Length: TBC



Chekhov's characters are relocated to Nigeria. Fuelled by foreign intervention, the conflict encroaches on their provincial village, and the sisters long to return to their former home in Lagos.

Audio Described: Fri 31 Jan 7.30pm, Sat 1 Feb 2.15pm (in-house), Touch Tour 12.45pm

Captioned: Fri 3 & Tue 28 Jan 7.30pm, Wed 29 Jan 2.15pm (by Stagertext)

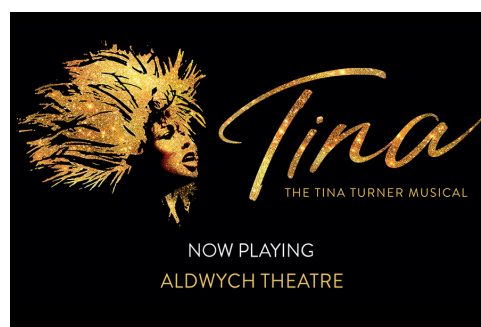


Tina: The Tina Turner Musical



Aldwych Theatre, Aldwych Covent Garden

020 7836 5537, Option 2 | aldwych.access@nederlander.co.uk
£39.75* | Length: 2h45, inc. interval



From humble beginnings in Nutbush, Tennessee, to her transformation into the global Queen of Rock 'n' Roll, Tina Turner didn't just break the rules, she rewrote them. This new stage musical reveals the untold story of a woman who dared to defy the bounds.

Captioned: Wed 8 Jan 7.30pm (by Stagertext)

Sign Language Interpreted: Wed 12 Feb 7.30pm (by Donna Ruane for Theatresign)



Translations



National Theatre, Southbank Waterloo

020 7452 3000 | access@nationaltheatre.org.uk
£16* | Length: 2h, inc. interval



Owen returns to rural Donegal from Dublin. With him are two British army officers. Their ambition is to create a map of the area, replacing the Gaelic names with English.

Audio Described: Fri 13 Dec 7.30pm, Sat 14 Dec 2pm (in-house), Touch Tour 12.30pm

Captioned: Tue 3 Dec 2pm, Tue 10 Dec 7.30pm (by Stagertext)



*Prices are face value. Fees may apply.

Uncle Vanya



Harold Pinter Theatre, Panton Street
Piccadilly Circus

0800 912 6971

£15-£95. Access rate: 1/3 off* | Length: TBC



This new adaptation of Chekhov's Uncle Vanya by Conor McPherson (Girl From The North Country, The Weir) stars Toby Jones (Detectorists, Captain America) as Vanya and Richard Armitage (The Crucible) as Astrov



Audio Described: Wed 12 Feb 7.30pm (by VocalEyes)

Captioned: Wed 26 Feb 7.30pm (by Stagertext)

The Welkin



National Theatre, Southbank
Waterloo

020 7452 3000 | access@nationaltheatre.org.uk
£16* | Length: TBC



Sally Poppy is sentenced to hang for murder. When she claims to be pregnant, a jury of matrons are to decide whether she's telling the truth.



Captioned: Sat 22 Feb 2.15pm, Mon 24 & Wed 26 Feb 7.30pm (by Stagertext)

The Wolf, The Duck And The Mouse



Unicorn Theatre, Tooley Street London Bridge

020 7645 0560 | boxoffice@unicorntheatre.com
£12-£22* | Length: 50min, no interval



The brilliantly subversive picture book comes to the Unicorn this Christmas, finding joy and friendship in the darkest and most unusual places. For ages 3-7.



Relaxed Performance: Thu 10 Dec 11am, Sun 29 Dec 2.30pm, Thu 2 Jan 1.30pm

Access London Theatre

Venue Information 2019

Detailed access information for more than 70 London theatres, including full addresses, useful phone and email contacts, details of sound amplification, adapted toilets, and information for wheelchair users.

For further information visit OfficialLondonTheatre.com/access

Theatre & address	Access phone number & email address	Accessible toilets situated	Number of wheelchair spaces	Sound amplification	Access from street to foyer	Access from theatre foyer to seats (number = stairs)	Level access	Stair lift/lift/ramp available
Adelphi Theatre Strand London WC2R 0NS	020 7087 7966 access@adelphitheatre.co.uk	Foyer Stalls	Stalls x2	Williams Sound Infrared (check with theatre for coverage)	One 15 cm step, or ramp available on right hand side	0 to Stalls 41 up to Dress Circle 79 up to Upper Circle	To Stalls	Ramp entrance
Aldwych Theatre Aldwych London WC2B 4DF	020 7836 5537 aldwych.access@nederlandr.co.uk	Circle	Circle x2 Box x2	Sennheiser Mobile Connect	Level access from access entrance on Drury Lane	22 to back of Dress Circle 26 to Stalls 50+ to Grand Circle	To front of Dress Circle from access entrance on Drury Lane	N/A
Almeida Theatre Almeida Street London N1 1TA	020 7288 4999 access@almeida.co.uk	Foyer	Stalls x2	Sennheiser Infrared	Level access	27 to Circle	To Foyer	Ramp to auditorium and toilets
Ambassadors Theatre West Street London WC2H 9ND	020 7395 5405 access@theambassadorstheatre.co.uk	N/A	N/A	Sennheiser Infrared	1 step	26 down to Stalls 5 up to Circle	N/A	N/A
Apollo Theatre Shaftesbury Avenue London W1D 7ES	0330 333 4815 access@nimaxtheatres.com	Stalls	Stalls x2	Williams Sound Infrared (check with theatre for coverage)	Stairs & lift	22 to Stalls 48 to Balcony 12 to Dress Circle 41 to Upper Circle	N/A	Lift to Stalls (300kg limit) - access via Shaftesbury Avenue
Apollo Victoria Theatre Wilton Road London SW1V 1LG	0800 912 6973 apollovictoriaaccess@theambassadors.com	Foyer	Circle x4	Induction Loop & Sennheiser Mobile Connect	Stairs & lift	29 to Stalls 14 to Dress Circle rows A-F 37 to Dress Circle rows G-Y	To toilets and foyer, from Vauxhall Bridge Road entrance	Platform lift to Dress Circle via Vauxhall Bridge Road entrance (200kg limit)
Arcola Theatre 24 Ashwin Street London E8 3DL	020 7503 1646 access@arcolatheatre.com	Lower level	Studio 1 x3 (A19, E6, 37) Studio 2 x2 (A1 & A2)	N/A	Level access	Studio 1 – Step-free access from Ashwin Street. Studio 2 – Step-free access by lift from the foyer	To foyer/box office Studio 1, via Ashwin Street	Lift to Studios 2, 3, 4
Arts Theatre 6-7 Great Newport Street London WC2H 7JB	020 7836 8463 boxoffice@artstheatrewestend.com	Circle	Circle x1	N/A	Ramp	5 to Circle 19 to Stalls	N/A	Ramp from street to Dress Circle
Barbican Theatre Silk Street London EC2Y 8DS	Assistance: 020 7382 7348 Free wheelchair reservation: 020 7638 8891 access@barbican.org.uk	Circle (within Theatre) Foyers (all levels)	Stalls x4	Sennheiser radio network	Step-free access to Barbican Level G Foyer. Stairs and lifts to Theatre Foyer	28 to Stalls 27 to Dress Circle 20 to Upper Circle 15 to Gallery	To Row T in Stalls, Row B in Upper Circle	Lifts to all floors
Bloomsbury Theatre Gordon Street London WC1H 0AH	020 3108 1000 boxoffice@bloomsburytheatre.com	Outer Foyer & Lower Foyer	Stalls x2	Sennheiser Infrared	Stairs & lift	15 down to Lower Ground 7 to Stalls 28+ to Dress Circle	N/A	Lift from Box Office down to Studio (Upper Ground to Lower Ground)
Bush Theatre 7 Uxbridge Road London W12 8LJ	020 8743 5050 access@bushtheatre.co.uk	Foyer	Stalls x4	Hearing loop	Ramp		To Stalls	Ramp to entrance on right hand side of building Lift
Cadogan Hall 5 Sloane Terrace London SW1X 9DQ	020 7730 4500	Rear of stalls	Stalls x4	Infrared	Level access	Lift to Stalls 62 to Gallery	To box office and foyer	Lift to Foyer Bar, Stalls and accessible toilet

Theatre & address	Access phone number & email address	Accessible toilets situated	Number of wheelchair spaces	Sound amplification	Access from street to foyer	Access from theatre foyer to seats (number = stairs)	Level access	Stair lift/lift/ramp available
Cambridge Theatre Earlham Street London WC2H 9HU	020 7087 7966 access@lwtheatres.co.uk	Stalls	Stalls x2	Williams Sound Infrared (check with theatre for coverage)	Level access	4 to Stalls 31 to Dress Circle 64 to Upper Circle	To Stalls	N/A
Criterion Theatre 218-223 Piccadilly London W1V 9LB	020 7839 8811 tickets@critterion-theatre.co.uk	Upper Circle	Upper Circle x2	Sennheiser Infrared	N/A	32 to Stalls 54 to Dress Circle 23 to Upper Circle	To Upper Circle via Jermyn St	N/A
Dominion Theatre Tottenham Court Road London W1T 7AQ	020 7927 0929 access@dominiontheatre.com	Stalls and next to Box (Main House), next to ladies toilet in Studio	Box x3 Stalls x3 (Main House), Studio x1	Sennheiser Mobile Connect	Level access	9 to Stalls 18+ to Dress Circle	To Box	Stair lift to Stalls (Main House) Stair lift then lift to Studio
Donmar Warehouse Earlham Street London WC2H 9LX	020 3282 3808 access@donmarwarehouse.com	Circle	Stalls x2	Induction Loop & Sennheiser Infrared	Stairs & ramp	26 to Stalls 49 to Circle	N/A	Lift to all levels
Drury Lane, Theatre Royal - CLOSED FOR REFURBISHMENT								
Duchess Theatre Catherine Street London WC2B 5LA	0330 333 4815 access@nimaxtheatres.com	Stalls	Stalls x2	Sennheiser Infrared	Stairs	20 to Stalls 11 to Dress Circle	N/A	AAT Stairclimber to Stalls
Duke of York's Theatre St Martin's Lane London WC2N 4BG	0800 912 6971 doyboxoffice@theambassadors.com	Circle	Circle x2	Sennheiser MobileConnect	Level access	23 to Stalls 23 to Upper Circle	Royal Circle Row C (Wheelchair spaces)	N/A
Fortune Theatre Russell Street London WC2B 5HH	0800 912 6971 fortuneboxoffice@theambassadors.com	Next to Box A - accessed via side fire exit	Dress x2	Induction Loop & Sennheiser Infrared	Level access	21 to Stalls 7 to Dress Circle 40 to Upper Circle	To Foyer	Wheelchair lift
Garrick Theatre Charing Cross Road London WC2H 0HH	0330 333 4815 access@nimaxtheatres.com	Foyer	Dress Circle x3	Sennheiser Infrared	Ramp	24 to Stalls 33 to Upper Circle	Dress Circle	Ramp
Gielgud Theatre Shaftesbury Avenue London W1D 6AR	0344 482 5137 access@delfontmackintosh.co.uk	Foyer	Dress Circle x3	Sennheiser Infrared	Stairs & ramp	20 to Stalls 30 to Grand Circle	Dress Circle	
Gillian Lynne Theatre Drury Lane London WC2B 5PQ	020 7087 7966 access@lwtheatres.co.uk	Foyer Stalls	Stalls x2	Sennheiser Infrared	Ramp	65 to Dress Circle Escalator plus 30 to Stalls	N/A	Lift to Stalls
Greenwich Theatre Crooms Hill London SE10 8ES	020 8858 7755 boxoffice@greenwichtheatre.org.uk	Foyer	Circle x2	Sennheiser Infrared	Ramp	2 flights of stairs to auditorium	N/A	Lift to Auditorium
Hackney Empire 291 Mare Street London E8 1EJ	020 8985 2424 boxoffice@hackneyempire.co.uk	Circle Foyer Stalls	Stalls x6	Infrared	Ramp	53 to Upper Circle 87 to Gallery	Stalls	Lift to Dress Circle, Upper Circle and Gallery
Hampstead Theatre Eton Avenue Swiss Cottage London NW3 3EU	020 7722 9301 access@hampsteadtheatre.com	Circle Foyer Stalls	Main House Stalls x3 Downstairs varies	Induction Loop (Main House only) & Sennheiser Infrared	Level access	0 to Stalls 22 to Dress Circle 27 to Lower Foyer	To Row G in Stalls and Row N in Circle	Lift access to all levels and both theatres

Theatre & address	Access phone number & email address	Accessible toilets situated	Number of wheelchair spaces	Sound amplification	Access from street to foyer	Access from theatre foyer to seats (number = stairs)	Level access	Stair lift/lift/ramp available
Harold Pinter Theatre Panton Street London SW1Y 4DN	0800 912 6971 customercare@theambassadors.com	Foyer	Dress Circle x4	Sennheiser Infrared	Level access	23 down to Stalls 0 to Dress	To Dress Circle	N/A
Haymarket, Theatre Royal Suffolk Street London SW1Y 4HT	020 7930 8800 boxoffice@trh.co.uk	Stalls	Stalls x2	Sennheiser Infrared	3 stairs	20 down then 11 up to Stalls 28 up to Royal Circle 60+ to Upper Circle and Gallery	Stalls, via separate Haymarket entrance	N/A
Her Majesty's Theatre Haymarket London SW1Y 4QL	020 7087 7966 access@lwtheatres.co.uk	Stalls	Stalls x4	Induction Loop & Williams Infrared	Ramp	22 down/18 up to Stalls 32 to Royal Circle 62 to Grand Circle 89 to Balcony	Stalls from Charles II St	Ramp to foyer
Kiln Theatre 269 Kilburn High Rd London NW6 7JR	020 7328 1000 access@kilntheatre.com	Foyer & Cinema Basement	Stalls x3	TBC	Level access	0 to Stalls	Stalls	Lift available
London Coliseum St Martin's Lane London WC2N 4ES	020 7845 9300 020 7379 1264 (fax) 020 7845 9300 (typetalk) access@eno.org	Balcony Dress Circle Stalls Basement	Stalls x6 Dress Circle x2	Induction Loop & Sennheiser radio transmission system	Ramp	0 to Stalls 30 to Dress Circle 63 to Upper Circle 93 to Balcony	To Stalls Row O, Dress Circle Row K, Balcony Row K	Lift to all Auditorium levels
London County Hall Belvedere Road London SE1 7PB	0844 815 7141 access@kxtickets.com	1 unisex, foyer level; 1 male & 1 female, courtroom stalls	Courtroom Stalls x1	Hearing loop	6 steps or ramp	31 to Courtroom 64 to Galleries row B, 2 down to row A, 2 up to row C, 6 up to row D	To Stalls Row F	Lift from street to Atrium, and separate lift from Atrium to Chamber (Stalls)
The London Palladium Argyll Street London W1F 7TF	020 7087 7966 access@lwtheatres.co.uk	Stalls	Stalls x4	Induction Loop & Sennheiser Infrared	Ramp	26+ to Royal Circle 47+ to Grand Circle	N/A	Passenger lift from street to Stalls
Lyceum Theatre Wellington Street London WC2E 7RQ	0800 912 6972 lyceumbo@theambassadors.com	Stalls	Stalls x8	Induction Loop & Sennheiser Infrared	Stairs	32 to Royal Circle 82 to Grand Circle	Stalls	Lift to Royal & Grand Circle
Lyric Theatre Shaftesbury Avenue London W1D 7ES	0330 333 4815 access@nimaxtheatres.com	Dress Circle	Boxes C, D & E	N/A	Ramp	23 to Stalls 25 to Upper Circle 60 to Balcony	To Boxes C-E in Dress Circle	Ramp to foyer
Lyric Hammersmith King Street London W6 0QL	020 8741 6850 Next Generation Text Service 18001 020 8741 6850 access@lyric.co.uk	Foyer Stalls Mezzanine + Downstairs Café (when open)	Main Theatre Stalls x4 Studio x9	Induction Loop & Sennheiser Infrared	Ramp & lift	33 to Stalls 26 to Dress Circle 26 to Upper Circle	N/A	Lift to all levels
Menier Chocolate Factory 53 Southwark Street London SE1 1RU	020 7378 1713 concessionbookings@menierchocolatefactory.com	Restaurant level	1 at front of auditorium	N/A	Level access to the restaurant	N/A	To the restaurant or auditorium only (must be prearranged)	N/A

Theatre & address	Access phone number & email address	Accessible toilets situated	Number of wheelchair spaces	Sound amplification	Access from street to foyer	Access from theatre foyer to seats (number = stairs)	Level access	Stair lift/lift/ramp available
National Theatre South Bank London SE1 9PX	020 7452 3000 boxoffice@nationaltheatre.org.uk / access@nationaltheatre.org.uk	Foyers - 9, including Understudy Bar	Stalls (x5 in Oliver, x4 in Lytelton, x2 in Dorfman)	Induction Loop in Oliver and Lytelton, Sennheiser Infrared in Olivier, Lytelton and Dorfman	Level access	1 to back of Olivier 0 to back of Lytelton and Dorfman All have steps leading down towards the front	Lytelton and Dorfman	Lifts to all levels
New Wimbledon Theatre 93 The Broadway Wimbledon London SW19 1QG	0800 912 6971 wimbledonboxoffice@theambassadors. com	Stalls (left of auditorium)	9	Sennheiser Infrared	6 stairs	12 to Stalls 33 to Dress 83 to Upper Circle	N/A	Lift to stalls from access door on Russell Road (230kg limit)
Noël Coward Theatre St Martin's Lane London WC2N 4AU	0344 482 5137 access@delfontmackintosh.co.uk	Foyer	Box M x1	Sennheiser Infrared	Ramp	31 to Stalls 3 to Royal Circle 30 to Grand Circle 54 to Balcony	Via ramp to foyer	Ramp
Novello Theatre Aldwych London WC2B 4LD	0344 482 5137 access@delfontmackintosh.co.uk	Dress Circle	Circle x2 (1x park, 1x transfer)	Sennheiser Infrared	Stairs	32 to Stalls 15 to Dress Circle 39 to Grand Circle 65 to Balcony	N/A	Chairlift from Catherine Street to Dress Circle
The Old Vic The Cut Waterloo London SE1 8NB	0344 871 7628 access@oldvictheatre.com	Stalls	Stalls x1 Transfer x2	Sennheiser Infrared	Stairs & ramp	3 to Foyer 2 to Stalls 29 to Dress Circle 49 to Upper Circle	Via ramp, to Stalls	Ramp
The Other Palace 12 Palace Street London SW1E 5JA	020 7087 7900 customer.relations@lwtheatres.co.uk	Foyer (Ground floor) and Studio (-2)	Main house x2, Studio dependent on availability (must be booked in advance)	Sennheiser Infrared (Main House only)	Ramp 2 stairs from Palace Street entrance to foyer 4 stairs from Palace Place entrance to foyer/bar	0 to Main House Row N 34 down to Main House Row A 17 to The Other Naughty Piglet restaurant 35 to Studio ground floor/standing 50 to Studio Gallery and 54 to Studio Upper Gallery (shorter route available upon request)	Via ramp	Lift from theatre foyer to The Other Naughty Piglet restaurant and Studio Ground Floor. Ramp from Palace Street entrance to foyer
Palace Theatre Shaftesbury Avenue London W1D 5AY	0330 333 4815 access@nimaxtheatres.com	Stalls	Stalls x3	Induction Loop & Williams Sound Infrared	Stairs	23 to Stalls from Foyer 30 to Dress Circle 49 to Grand Circle 70 to Balcony	Stalls	N/A
Park Theatre 11 Clifton Terrace London N4 4JP	020 7870 6876 access@parktheatre.co.uk	First and Lower Ground Floors	Park200 x2 Park90 x1	Infrared	Level access	9 to Park200 stalls 8 to Park200 circle and Park90	Box Office and ground floor cafe bar	Lift to all levels
Peacock Theatre Portugal Street London WC2A 2HT	020 7863 8222 020 7863 8015 (minicom) access@sadlerswells.com	Foyer Stalls	Stalls x2 Circle x2	Sennheiser Infrared	Lift	5 to Foyer	N/A	Wheelchair platform from street to foyer Lift to all levels
Phoenix Theatre Charing Cross Road London WC2H 0JP	0800 912 6971 phoenixboxoffice@theambassadors.com	Circle	Circle x1	Induction Loop & Sennheiser Infrared	Stairs	13 to Stalls 21 to Dress Circle 51 to Upper Circle	Via Flitcroft St	N/A

Theatre & address	Access phone number & email address	Accessible toilets situated	Number of wheelchair spaces	Sound amplification	Access from street to foyer	Access from theatre foyer to seats (number = stairs)	Level access	Stair lift/lift/ramp available
Piccadilly Theatre Denman Street London W1D 7DY	0800 912 6971 piccadillyboxoffice@theambassadors.com	Royal Circle (on street level)	Royal Circle x3	Sennheiser Infrared	Level access	22 to Stalls 30 to Royal Circle 70 to Grand Circle	Royal Circle	N/A
Playhouse Theatre Northumberland Avenue London WC2N 5DE	0800 912 6971 customercare@theambassadors.com	Foyer	Stalls x6	N/A	Ramp	28 to Dress Circle 82 to Upper Circle	To Stalls	Ramp to Foyer
Polka Theatre The Broadway London SW19 1SB	020 8543 4888 020 8545 8365 (fax) bookings@polkathatre.com	Foyer	Main Theatre x4 Adventure Theatre x2	Induction Loop in Main Theatre and Adventure Theatre	Level access	36 to Adventure Theatre	To Foyer	Lift
Prince Edward Theatre Old Compton Street London W1D 4HS	0344 482 5137 access@delfontmackintosh.co.uk	Foyer	Dress Circle Box x2 3x Wheelchair transfers	Sennheiser Infrared	Ramp	24 to Stalls 13-27 to Dress Circle 51 to front of Grand Circle, 76 to back	To Dress Circle Box 1	Ramp
Prince of Wales Theatre Coventry Street London W1D 6AS	0344 482 5137 access@delfontmackintosh.co.uk	Lift from Foyer to Delfont Bar	Stalls x3	Sennheiser Infrared	Level access	51 to Dress Circle	To Stalls	Lift in Foyer to Stalls Bar and Toilets
Regent's Park Open Air Theatre Inner Circle Regent's Park London NW1 4NU	0333 320 2834 boxoffice@openairtheatre.com	Foyer	4-8 (show dependant)	Radio Signal	Ramp		Yes	N/A
Rose Theatre Kingston 24-26 High Street Kingston KT1 1HL	020 8174 0090 info@rosetheatrekingston.org	All levels	Stalls and circle x10	Sennheiser Infrared	Level access	Lift to all levels	To foyer and The Rose Cafe	Lift to all levels
Royal Court Theatre Sloane Square London SW1W 8AS	020 7565 5000 boxoffice@royalcourttheatre.com	Stalls Foyer & Circle Foyer	Stalls x5 Studio x2	Induction Loop & Sennheiser Infrared	Lift			Lift to auditoriums
Royal Opera House Covent Garden London WC2E 9DD	020 7304 4000 boxofficeaccess@roh.org.uk	All levels	Stalls, Circle x6 Grand Tier x4 Balcony x6 Amphitheatre x3	Audio Loop & Sennheiser Transmitter	Level access	9 to Orchestra Stalls Step free access to all other levels	Yes	Lifts to all areas except Orchestra Stalls which is accessible via 9 steps
Sadler's Wells Rosebery Avenue London EC1R 4TN	020 7863 8000 020 7863 8015 (minicom) access@sadlerswells.com	Circle Stalls	Stalls x3 Circle x1	Sennheiser Infrared	Level access		To Foyer	Lift to all levels
Sam Wanamaker Playhouse (Shakespeare's Globe) New Globe Walk London SE1 9DT	020 7902 1409 access@shakespearesglobe.com	Piazza level, Lecture Theatre level	2	Induction Loop	Level access (foyer at street level)	0 to Stalls 15 to Lower Circle 35 to Upper Circle	To Stalls	Lift to all levels
Savoy Theatre Strand London WC2R 0ET	0800 912 6971 jamescarder@theambassadors.com	Dress Circle	Dress Circle x2	Radio Signal	Level access to box office only	75 to Stalls 32 to Dress Circle, addi- tional stairs to rows 2 to Upper Circle, addi- tional stairs to rows	To Dress Circle	Ramp (to Dress Circle auditorium and access toilet)

Theatre & address	Access phone number & email address	Accessible toilets situated	Number of wheelchair spaces	Sound amplification	Access from street to foyer	Access from theatre foyer to seats (number = stairs)	Level access	Stair lift/lift/ramp available
Shaftesbury Theatre 210 Shaftesbury Avenue London WC2H 8DP	020 7379 5399 Shaftesburyboxoffice@ shaftesburytheatre.com	Royal Circle	Royal Circle x4 (2x boxes, 2x transferable)	Induction Loop	Level access	Level access and/or ramp	Royal Circle	Ramp
Shakespeare's Globe New Globe Walk London SE1 9DT	020 7902 1409 access@shakespearesglobe.com	Piazza level, Lecture Theatre level	Stalls x1 Circle x3	Induction Loop	Level access	28 to Middle Gallery 50 to Upper Gallery lift to main theatre level	Yes	Lift to Circle Ramps to Stalls
Soho Theatre 21 Dean Street London W1D 3NE	020 7478 0100 box1@sohotheatre.com	Ground Floor Bar 2nd Floor 3rd Floor	2 per perf space (Upstairs, Theatre, Downstairs)	Induction Loop (Upstairs & Downstairs) Sennheiser Infrared (Theatre)	Level access	36 to 1st floor 17 more Upstairs 21 down to Downstairs	Foyer Bar & Box Office	Lift to all floors Lift to Studio 2 & Studio Bar Stair lift to Studio 1
Sondheim Theatre Shaftesbury Ave, Soho, London W1D 6BA	0344 482 5137 access@delfontmackintosh.co.uk	Foyer	Dress x2	Induction Loop & Sennheiser Infrared	Level access	18 to Stalls 19 to Dress Circle 38 to Upper Circle	To Box Office and Dress Circle	N/A
St Martin's Theatre West Street London WC2H 9NZ	020 3034 2604 access@stmartinstheatre.co.uk	Dress Circle	Dress Circle x2	Sennheiser Infrared (Auditorium)	3 stairs & ramp	29 to Stalls 3 to Dress Circle 28 to Upper Circle	N/A	Box C and Dress Circle via temporary ramp
Stratford East, Theatre Royal Gerry Raffles Square London E15 1BN	020 8534 0310 tickets@stratfordeast.com	Ground level	6	Sennheiser tourguide system	Level access	3 to Stalls 15 to Dress Circle 15 to Upper Circle	Foyer & Stalls	Lifts to upper level
Trafalgar Studios 14 Whitehall London SW1A 2DY	0800 912 6971 trafalgarbox@trafalgarentertainment.com	Studio Bar	Studio 1 x1 Studio 2 x1	Induction Loop Sennheiser Infrared Sennheiser Mobile Connect	Level access	14 up to Studio 1 28 down to Studio 2	Foyer Bar & Box Office	Lift to Studio 2 & Studio Bar Stair lift to Studio 1
Unicorn Theatre 147 Tooley Street London SE1 2HZ	020 7645 0560 boxoffice@unicorntheatre.com	Foyer Level 2 (accessible from all floors)	Stalls x2	Sennheiser Infrared	Stairs & ramp	22 to Lower Ground 57 up to Weston Level 0 to Clore Studio	Yes	Lift to all floors
Vaudeville Theatre Strand London WC2R 0NH	0330 333 4815 access@nimaxtheatres.com	By arrangement with the Adelphi Theatre	Stalls x2	Infrared	Stairs	6 down to Stalls 22 up to Dress Circle 54 up to Upper Circle	N/A	AAT Stairclimber to Stalls
Victoria Palace Theatre Victoria Street London SW1E 5EA	0344 482 5137 access@delfontmackintosh.co.uk	Stalls	Stalls x2	Sennheiser Infrared (Auditorium)	Level access	4 down to Stalls 15 to Royal Circle 78 to Grand Circle	To Stalls from Allington St	N/A
Wyndham's Theatre Charing Cross Road London WC2H 0DA	0344 482 5137 access@delfontmackintosh.co.uk	Side of Box A	Stalls (Box A) x2	Induction Loop Sennheiser Infrared	Stairs	18 down to Stalls 18 to Royal Circle 41 to Grand Circle 56 to Balcony	N/A	Lift to Box A
Young Vic 66 The Cut London SE1 9LZ	020 7922 2922 boxoffice@youngvic.org	Ground and 1st floors	Main House x2 Maria x1 Clare x1	Sennheiser Infrared (all)	Level access (all)	Downstairs step free 18 to Balcony (Main House, Maria & Clare)	Yes	Lift (all)

OfficialLondonTheatre.com

 [London_Theatre](#)  [OfficialLondonTheatre](#)  [londontheatre](#)

OfficialLondonTheatre.com is the number one site to get tickets, news and exclusive interviews for top London shows. Run by not-for-profit organisation Society of London Theatre, we work directly with theatre owners and producers to give you access to information, features, and offers that you won't find anywhere else.

Q-Park

[q-park.co.uk/theatreland](#)  [qpark_uk](#)  [QParkUK](#)

Get 50% off parking in Theatreland.

Signed Culture

[signedculture.org.uk](#) | 01925 710 561 | admin@signedculture.org.uk

  [signedculture](#)

Promoting availability and awareness of British Sign Language (BSL) interpreted theatre.

Stagetext

[stagetext.org](#) | 020 7377 0540 | enquiries@stagetext.org   [stagetext](#)

Delivering captioned performances and promoting usage in UK venues.

Theatresign

[theatresign.com](#) | 18002 01903 782 602 | enquiry@theatresign.com

 [theatresign](#)

Delivering British Sign Language interpretation for West End theatre and major UK touring venues.

Tourism for ALL UK

[tourismforall.org.uk](#) | 0845 124 9971 | info@tourismforall.org.uk

 [tourismforalluk](#)  [TFAUK](#)

For information on accessible accommodation, tourism advice and special offers on hotels.

Transport for London (TfL)

[tfl.gov.uk/accessibility](#) | 0343 222 1234 | Textphone: 0800 112 3456 |

tflaccessibility@tfl.gov.uk  [tflaccess](#)

For detailed advice on accessible stations and transport in London.

Visit London

[visitlondon.com](#)   [visitlondon](#)

The official website for visiting London.

VocalEyes

[vocaleyeyes.co.uk](#) | 020 7375 1043 | enquiries@vocaleyeyes.co.uk

  [vocaleyeyesAD](#)

Delivering audio description for blind and partially sighted people.